

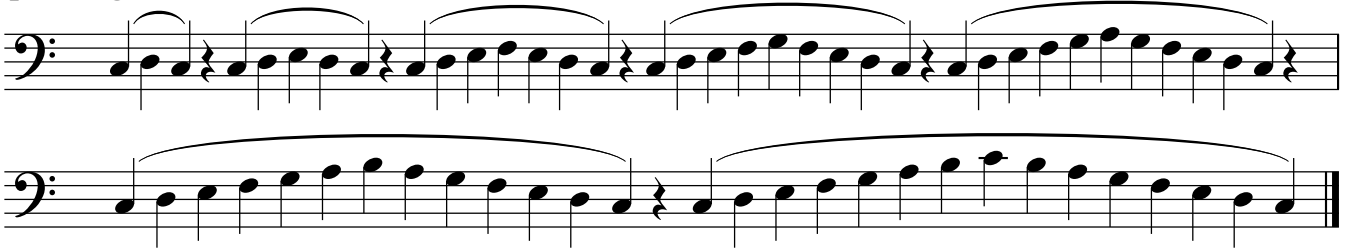
# C Major Scale



**1. Intervals**



**2. Expanding Scale**



**3. Scale in Thirds**



**4. Triplets**



**5. Clarke Study**



**6. Ascending Intervals**



**7. Descending Intervals**



**8. Arpeggio Patterns**



# Advanced Patterns

## 9. Arban Modal Scale Pattern

Arban Modal Scale Pattern in 3/4 time, bass clef. The pattern consists of four lines of music. Each line contains four measures of eighth-note runs. The first line starts on G2 and ascends to G3. The second line starts on G3 and ascends to G4. The third line starts on G4 and ascends to G5. The fourth line starts on G5 and descends to G4.

## 10. Remington Modal Scale Pattern

Remington Modal Scale Pattern in 4/4 time, bass clef. The pattern consists of three lines of music. Each line contains four measures of eighth-note runs. The first line starts on G2 and ascends to G3. The second line starts on G3 and ascends to G4. The third line starts on G4 and descends to G2.

## 11. Sixths

Sixths in 4/4 time, bass clef. The pattern consists of one line of music with four measures. Each measure contains a pair of notes (a sixth interval) moving in a descending sequence: G2-A2, F2-G2, E2-F2, D2-E2.

## 12. Descending Octave Displacement

Descending Octave Displacement in 4/4 time, bass clef. The pattern consists of one line of music with four measures. Each measure contains a pair of notes (an octave interval) moving in a descending sequence: G2-A2, F2-G2, E2-F2, D2-E2.

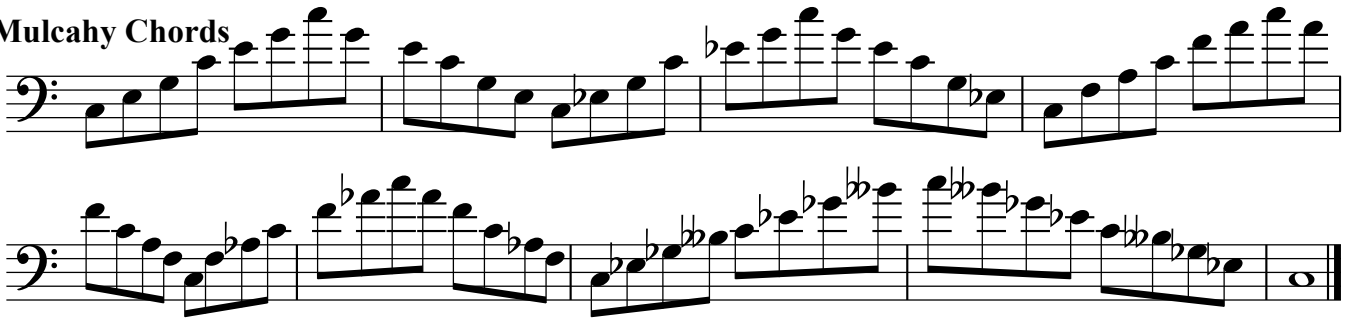
## 13. Ascending Octave Displacement

Ascending Octave Displacement in 4/4 time, bass clef. The pattern consists of one line of music with four measures. Each measure contains a pair of notes (an octave interval) moving in an ascending sequence: G2-A2, F2-G2, E2-F2, D2-E2.

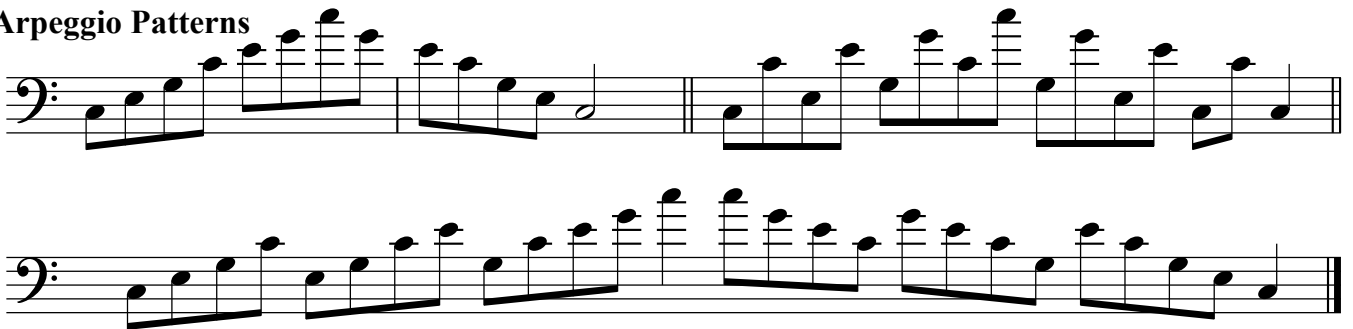
## 14. Scale in Octaves

Scale in Octaves in 4/4 time, bass clef. The pattern consists of one line of music with four measures. Each measure contains a pair of notes (an octave interval) moving in an ascending sequence: G2-A2, F2-G2, E2-F2, D2-E2.

## 15. Mulcahy Chords

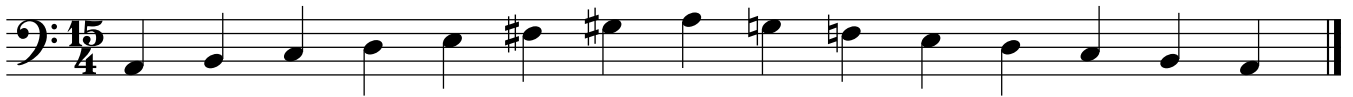


## 16. Arpeggio Patterns



## A Minor Scale

## Melodic Minor



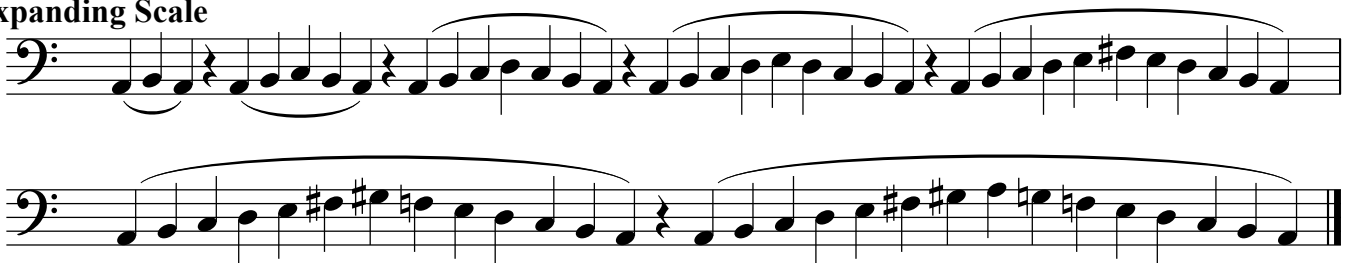
## Harmonic Minor



## 1. Intervals



## 2. Expanding Scale



## 3. Scale in Thirds



4. Triplets

5. Clarke Study

6. Ascending Intervals

7. Descending Intervals

8. Arpeggio Patterns

Advanced Patterns

9. Arban Modal Scale Pattern

10. Remington Modal Scale Pattern

## 11. Sixths



## 12. Descending Octave Displacement



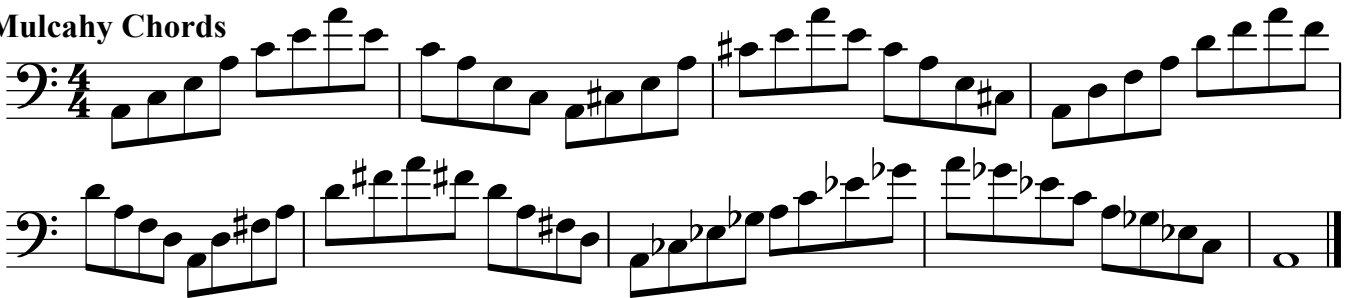
## 13. Ascending Octave Displacement



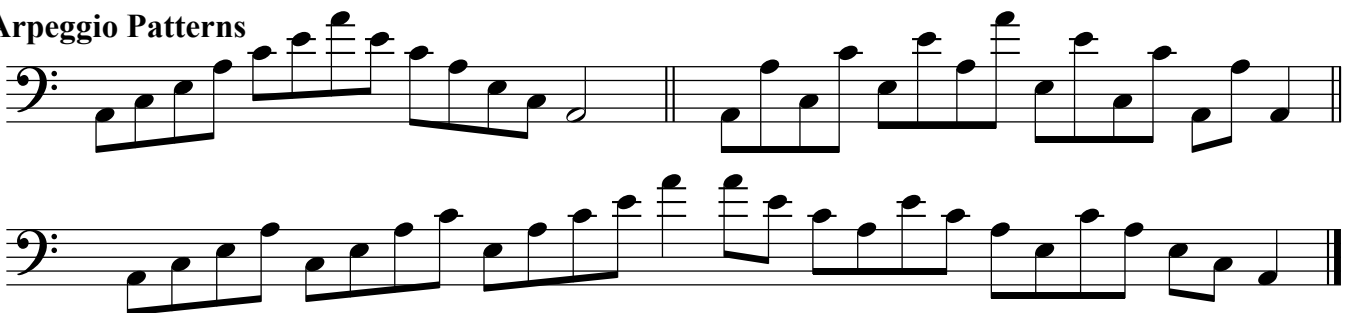
## 14. Scale in Octaves



## 15. Mulcahy Chords



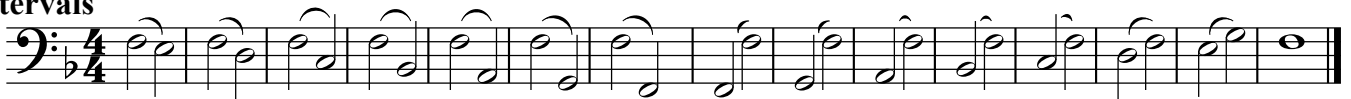
## 16. Arpeggio Patterns



## F Major Scale



## 1. Intervals



2. Expanding Scale

Two staves of music in bass clef, 2/4 time. The first staff shows an ascending eighth-note scale with intervals that expand from a whole step to a major third. The second staff shows a descending eighth-note scale with intervals that contract from a major third to a whole step.

3. Scale in Thirds

One staff of music in bass clef, 4/4 time. It features a scale of intervals of a third, starting on G2 and ending on G3.

4. Triplets

One staff of music in bass clef, 12/8 time. It features eighth-note triplet patterns in both ascending and descending directions.

5. Clarke Study

One staff of music in bass clef, 4/4 time. It features a complex eighth-note pattern with a mix of eighth and sixteenth notes.

6. Ascending Intervals

One staff of music in bass clef, 4/4 time. It features ascending intervals of a second (whole steps) in a steady eighth-note rhythm.

7. Descending Intervals

One staff of music in bass clef, 4/4 time. It features descending intervals of a second (whole steps) in a steady eighth-note rhythm.

8. Arpeggio Patterns

One staff of music in bass clef, 4/4 time. It features arpeggiated chords in a steady eighth-note rhythm.

Advanced Patterns

9. Arban Modal Scale Pattern

Four staves of music in bass clef, 3/4 time. The first staff shows the modal scale pattern. The following three staves show variations of the pattern, including ascending and descending runs with slurs and accents.

### 10. Remington Modal Scale Pattern

Three staves of music in bass clef, 4/4 time, showing a complex modal scale pattern with many sixteenth notes and triplets.

### 11. Sixths

One staff of music in bass clef, 4/4 time, showing a simple scale pattern with intervals of sixths.

### 12. Descending Octave Displacement

One staff of music in bass clef, 4/4 time, showing a descending scale pattern with octave displacement.

### 13. Ascending Octave Displacement

One staff of music in bass clef, 4/4 time, showing an ascending scale pattern with octave displacement.

### 14. Scale in Octaves

One staff of music in bass clef, 4/4 time, showing a scale pattern with octave displacement.

### 15. Mulcahy Chords

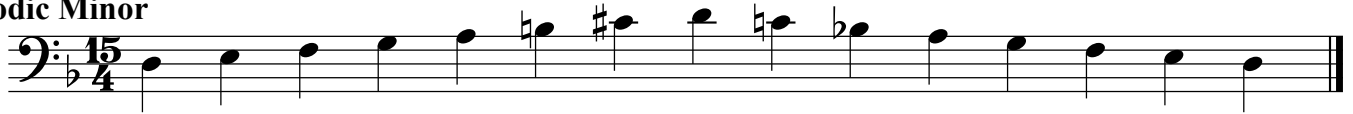
Two staves of music in bass clef, 4/4 time, showing a complex scale pattern with many sixteenth notes and triplets, including various chordal structures.

### 16. Arpeggio Patterns

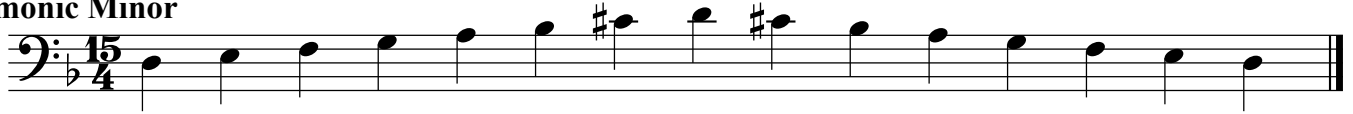
Two staves of music in bass clef, 4/4 time, showing arpeggio patterns.

# D Minor Scale

## Melodic Minor



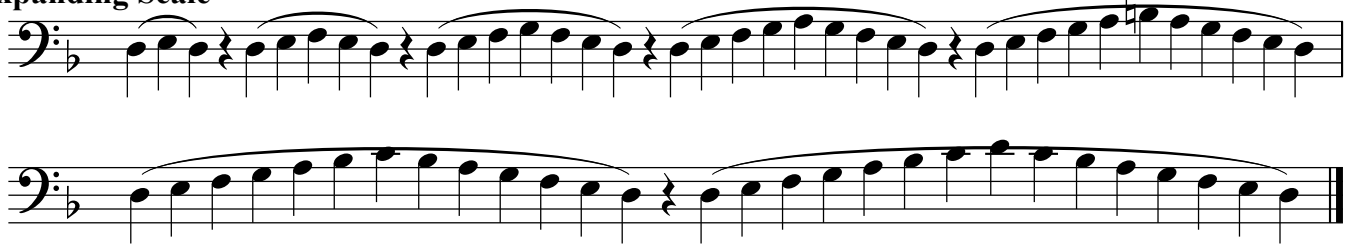
## Harmonic Minor



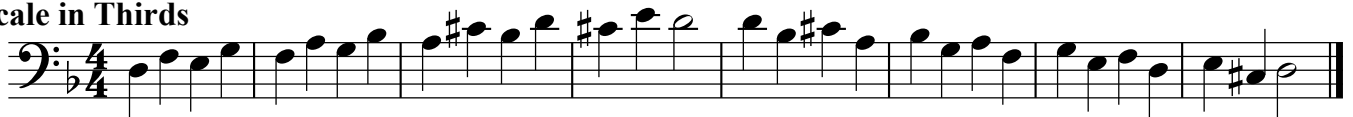
## 1. Intervals



## 2. Expanding Scale



## 3. Scale in Thirds



## 4. Triplets



## 5. Clarke Study



## 6. Ascending Intervals



## 7. Descending Intervals



## 8. Arpeggio Patterns





# Advanced Patterns

## 9. Arban Modal Scale Pattern

Arban Modal Scale Pattern: A complex scale exercise in bass clef, 3/4 time, with a key signature of one flat (B-flat). The pattern consists of four staves of music, featuring intricate sixteenth-note runs and chromatic passages.

## 10. Remington Modal Scale Pattern

Remington Modal Scale Pattern: A complex scale exercise in bass clef, 4/4 time, with a key signature of one flat (B-flat). The pattern consists of three staves of music, featuring intricate sixteenth-note runs and chromatic passages.

## 11. Sixths

Sixths: A scale exercise in bass clef, 4/4 time, with a key signature of one flat (B-flat). The pattern consists of one staff of music, featuring a sequence of notes with a sixth interval between them.

## 12. Descending Octave Displacement

Descending Octave Displacement: A scale exercise in bass clef, 4/4 time, with a key signature of one flat (B-flat). The pattern consists of one staff of music, featuring a descending scale with octave displacement.

## 13. Ascending Octave Displacement

Ascending Octave Displacement: A scale exercise in bass clef, 4/4 time, with a key signature of one flat (B-flat). The pattern consists of one staff of music, featuring an ascending scale with octave displacement.

## 14. Scale in Octaves

Scale in Octaves: A scale exercise in bass clef, 4/4 time, with a key signature of one flat (B-flat). The pattern consists of one staff of music, featuring a scale played in octaves.

## 15. Mulcahy Chords

Two staves of music in bass clef, 4/4 time, key of B-flat major. The first staff contains two measures of eighth-note chords: B-flat, C, D, E-flat, F, G, A, B-flat. The second staff contains two measures of eighth-note chords: B-flat, C, D, E-flat, F, G, A, B-flat.

## 16. Arpeggio Patterns

Two staves of music in bass clef, 4/4 time, key of B-flat major. The first staff contains two measures of eighth-note arpeggios: B-flat, C, D, E-flat, F, G, A, B-flat. The second staff contains two measures of eighth-note arpeggios: B-flat, C, D, E-flat, F, G, A, B-flat.

## G Major Scale

One staff of music in bass clef, 4/4 time, key of G major. The scale is written as a sequence of eighth notes: G, A, B, C, D, E, F#, G, A, B, C, D, E, F#, G.

## 1. Intervals

One staff of music in bass clef, 4/4 time, key of G major. The scale is written as a sequence of eighth notes with slurs over pairs of notes, indicating intervals: G-A, A-B, B-C, C-D, D-E, E-F#, F#-G, G-A, A-B, B-C, C-D, D-E, E-F#, F#-G.

## 2. Expanding Scale

Two staves of music in bass clef, 4/4 time, key of G major. The first staff contains two measures of eighth-note scales with slurs over groups of notes, indicating expanding intervals: G-A-B, A-B-C, B-C-D, C-D-E, D-E-F#, E-F#-G, F#-G-A, G-A-B. The second staff contains two measures of eighth-note scales with slurs over groups of notes, indicating expanding intervals: G-A-B, A-B-C, B-C-D, C-D-E, D-E-F#, E-F#-G, F#-G-A, G-A-B.

## 3. Scale in Thirds

One staff of music in bass clef, 4/4 time, key of G major. The scale is written as a sequence of eighth notes in thirds: G-A, B-C, D-E, F#-G, A-B, C-D, E-F#, G-A, B-C, D-E, F#-G, A-B, C-D, E-F#, G-A.

## 4. Triplets

One staff of music in bass clef, 12/8 time, key of G major. The scale is written as a sequence of eighth notes in triplets: G-A-B, C-D-E, F#-G-A, B-C-D, E-F#-G, A-B-C, D-E-F#, G-A-B, C-D-E, F#-G-A, B-C-D, E-F#-G, A-B-C, D-E-F#, G-A-B.

## 5. Clarke Study

One staff of music in bass clef, 4/4 time, key of G major. The scale is written as a sequence of eighth notes in a study pattern: G-A-B, C-D-E, F#-G-A, B-C-D, E-F#-G, A-B-C, D-E-F#, G-A-B, C-D-E, F#-G-A, B-C-D, E-F#-G, A-B-C, D-E-F#, G-A-B.

## 6. Ascending Intervals



## 7. Descending Intervals

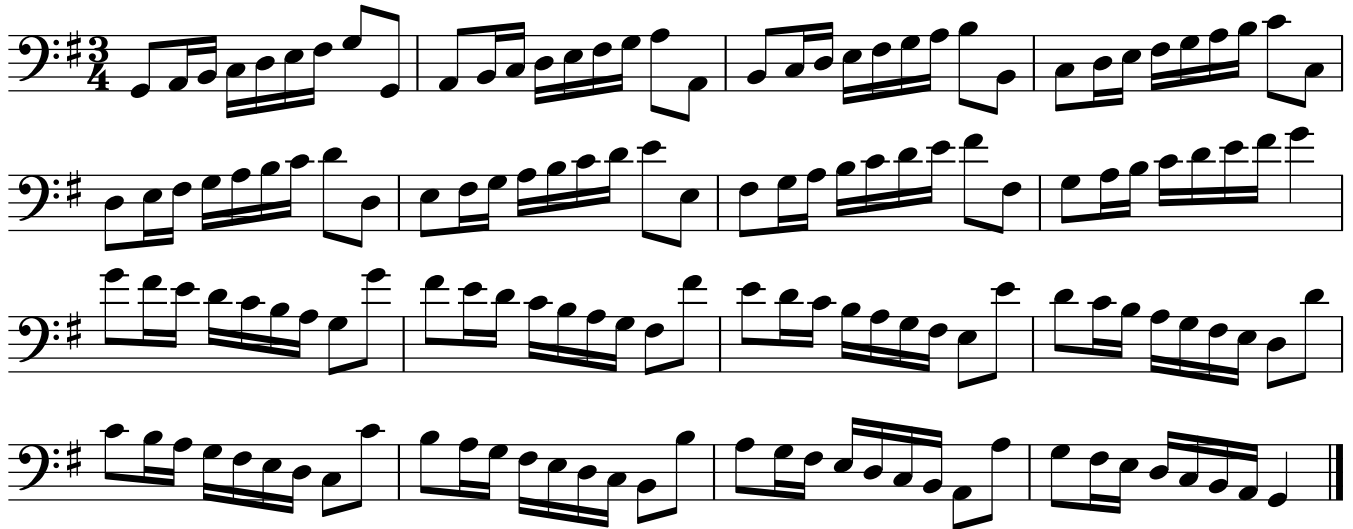


## 8. Arpeggio Patterns

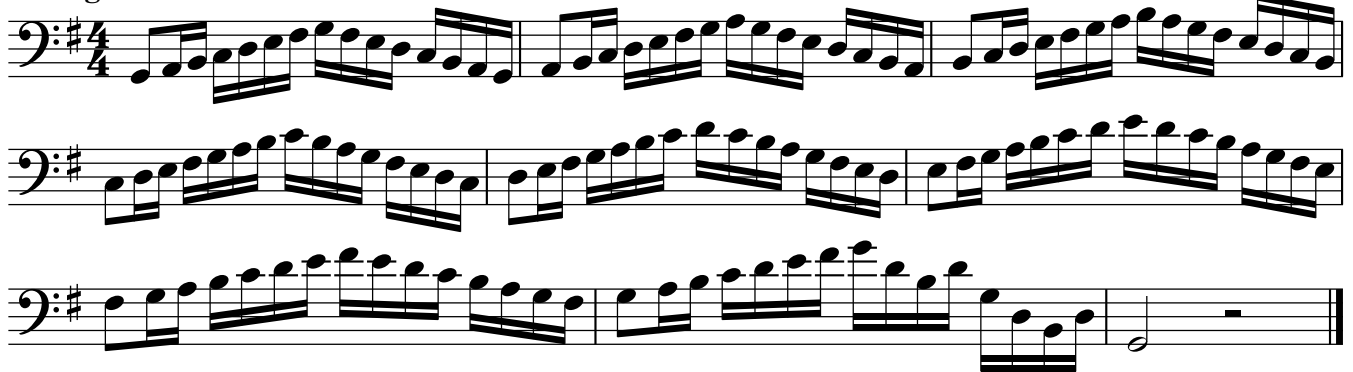


## Advanced Patterns

## 9. Arban Modal Scale Pattern



## 10. Remington Modal Scale Pattern



## 11. Sixths



12. Descending Octave Displacement

13. Ascending Octave Displacement

14. Scale in Octaves

15. Mulcahy Chords

16. Arpeggio Patterns

## E Minor Scale

Melodic Minor

Harmonic Minor

1. Intervals

2. Expanding Scale

3. Scale in Thirds

4. Triplets

5. Clarke Study

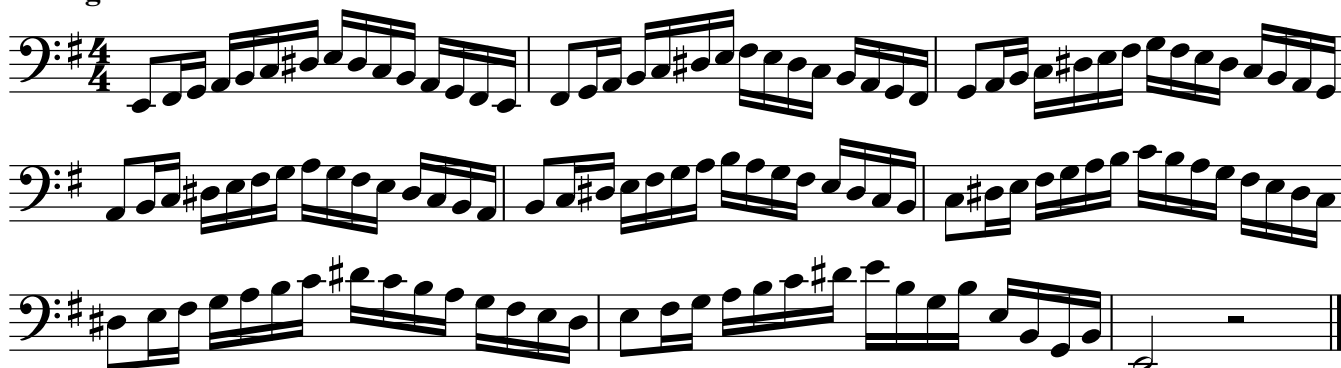
6. Ascending Intervals

7. Descending Intervals

8. Arpeggio Patterns

Advanced Patterns

9. Arban Modal Scale Pattern

**10. Remington Modal Scale Pattern**

Three staves of music in bass clef, 4/4 time, key of D major. The first staff shows a complex rhythmic pattern of eighth and sixteenth notes. The second staff continues the pattern with a different rhythmic grouping. The third staff concludes the pattern with a final note and a whole rest.

**11. Sixths**

One staff of music in bass clef, 4/4 time, key of D major. The melody consists of eighth notes, with a pair of sixths (F# and C) appearing in the second measure.

**12. Descending Octave Displacement**

One staff of music in bass clef, 4/4 time, key of D major. The melody features a descending line of eighth notes, with the second measure containing a pair of sixths (F# and C) in an octave displacement.

**13. Ascending Octave Displacement**

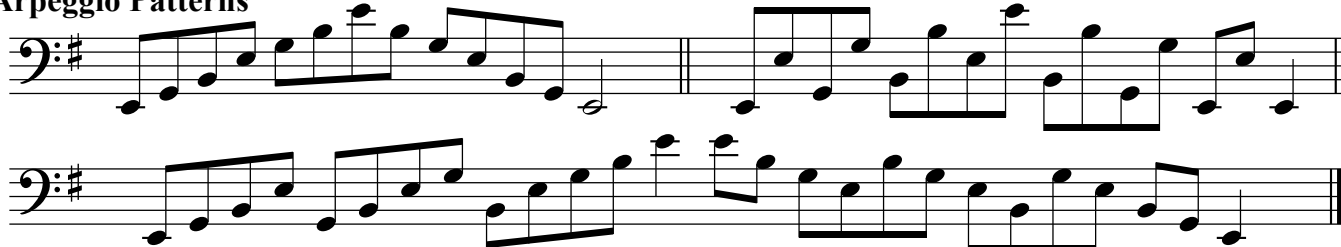
One staff of music in bass clef, 4/4 time, key of D major. The melody features an ascending line of eighth notes, with the second measure containing a pair of sixths (F# and C) in an octave displacement.

**14. Scale in Octaves**

One staff of music in bass clef, 4/4 time, key of D major. The melody consists of eighth notes, with a pair of sixths (F# and C) appearing in the second measure.

**15. Mulcahy Chords**

Two staves of music in bass clef, 4/4 time, key of D major. The first staff shows a sequence of chords and eighth notes. The second staff continues the sequence with a different rhythmic grouping.

**16. Arpeggio Patterns**

Two staves of music in bass clef, 4/4 time, key of D major. The first staff shows a sequence of arpeggios and eighth notes. The second staff continues the sequence with a different rhythmic grouping.

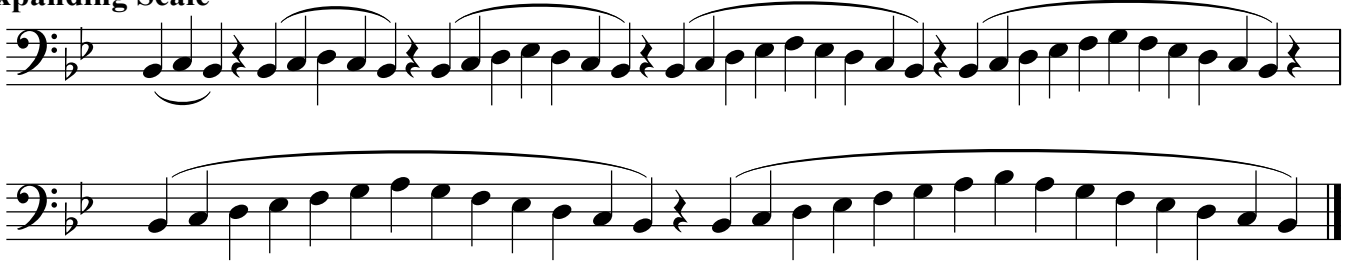
# B $\flat$ Major Scale



## 1. Intervals



## 2. Expanding Scale



## 3. Scale in Thirds



## 4. Triplets



## 5. Clarke Study



## 6. Ascending Intervals



## 7. Descending Intervals



## 8. Arpeggio Patterns



## Advanced Patterns

## 9. Arban Modal Scale Pattern

Arban Modal Scale Pattern: A three-staff exercise in bass clef, 3/4 time, and B-flat major. The first staff contains the main scale pattern. The second and third staves show the pattern repeated in higher octaves, with the third staff ending with a double bar line.

## 10. Remington Modal Scale Pattern

Remington Modal Scale Pattern: A three-staff exercise in bass clef, 4/4 time, and B-flat major. The first staff contains the main scale pattern. The second and third staves show the pattern repeated in higher octaves, with the third staff ending with a double bar line.

## 11. Sixths

Sixths: A single-staff exercise in bass clef, 4/4 time, and B-flat major. The pattern consists of a sequence of sixths (dyads) moving up and down the scale.

## 12. Descending Octave Displacement

Descending Octave Displacement: A single-staff exercise in bass clef, 4/4 time, and B-flat major. The pattern consists of a descending scale with an octave displacement (interval of a 12th) between notes.

## 13. Ascending Octave Displacement

Ascending Octave Displacement: A single-staff exercise in bass clef, 4/4 time, and B-flat major. The pattern consists of an ascending scale with an octave displacement (interval of a 12th) between notes.

## 14. Scale in Octaves

Scale in Octaves: A single-staff exercise in bass clef, 4/4 time, and B-flat major. The pattern consists of a scale with an octave displacement (interval of a 12th) between notes.



15. Mulcahy Chords

Two staves of music in bass clef, G minor key. The first staff contains a sequence of chords: Gm, Am, Bbm, Cm, Dm, Em, Fm, Gm. The second staff contains a sequence of chords: Gm, Am, Bbm, Cm, Dm, Em, Fm, Gm, ending with a whole note G.

16. Arpeggio Patterns

Two staves of music in bass clef, G minor key. The first staff shows arpeggiated chords: Gm, Am, Bbm, Cm, Dm, Em, Fm, Gm. The second staff shows arpeggiated chords: Gm, Am, Bbm, Cm, Dm, Em, Fm, Gm.

# G Minor Scale

Melodic Minor

Single staff in bass clef, G minor key, 15/4 time signature. The scale is: G, A, B, C, D, E, F, G, A, B, C, D, E, F, G.

Harmonic Minor

Single staff in bass clef, G minor key, 15/4 time signature. The scale is: G, A, B, C, D, E, F, G, A, B, C, D, E, F, G.

1. Intervals

Single staff in bass clef, G minor key, 4/4 time signature. Shows intervals between notes: G-A, A-B, B-C, C-D, D-E, E-F, F-G, G-A, A-B, B-C, C-D, D-E, E-F, F-G.

2. Expanding Scale

Two staves in bass clef, G minor key. The first staff shows a scale with expanding intervals: G-A, A-B, B-C, C-D, D-E, E-F, F-G, G-A, A-B, B-C, C-D, D-E, E-F, F-G. The second staff shows a scale with expanding intervals: G-A, A-B, B-C, C-D, D-E, E-F, F-G, G-A, A-B, B-C, C-D, D-E, E-F, F-G.

3. Scale in Thirds

Single staff in bass clef, G minor key, 4/4 time signature. Shows the scale in thirds: G-A, B-C, D-E, F-G, A-B, C-D, E-F, G-A, B-C, D-E, F-G, A-B, C-D, E-F, G-A.

4. Triplets

Single staff in bass clef, G minor key, 12/8 time signature. Shows the scale in triplets: G-A-B, C-D-E, F-G-A, B-C-D, E-F-G, A-B-C, D-E-F, G-A-B, C-D-E, F-G-A, B-C-D, E-F-G.

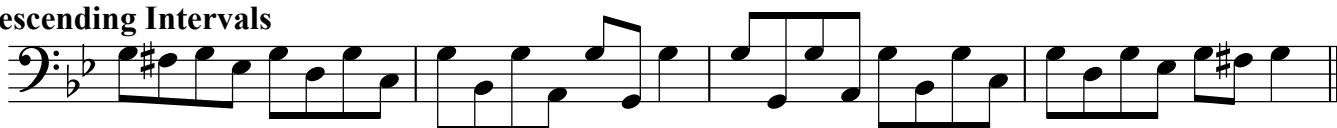
5. Clarke Study



6. Ascending Intervals



7. Descending Intervals

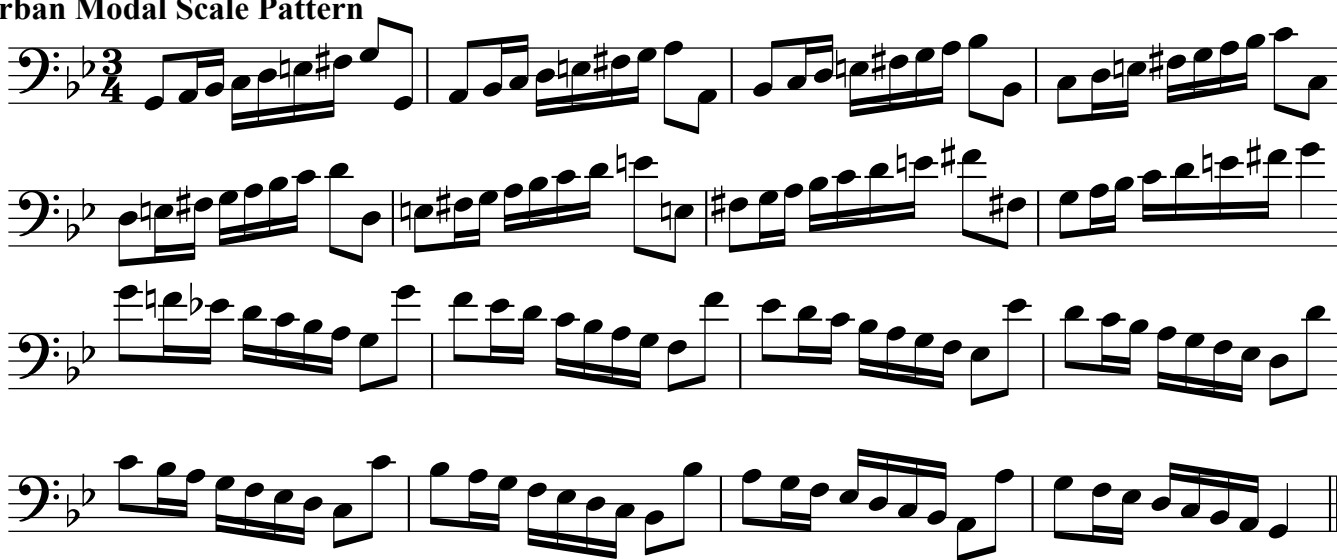


8. Arpeggio Patterns

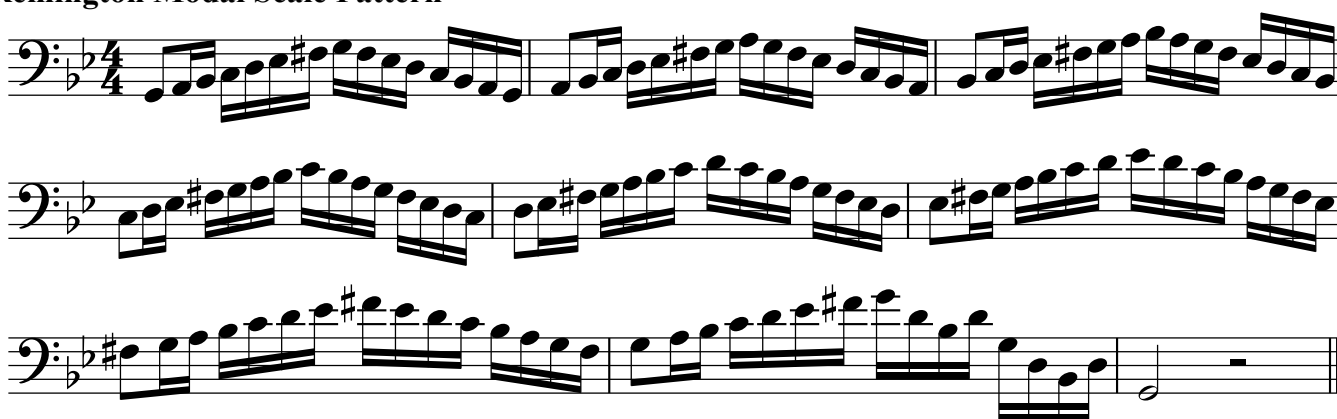


Advanced Patterns

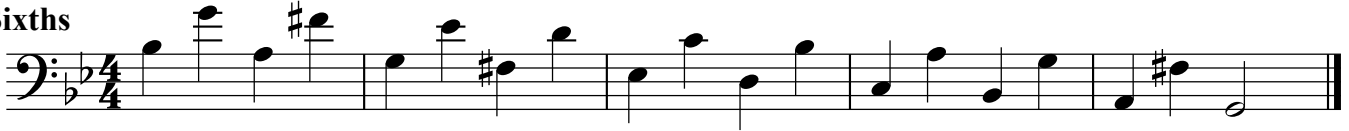
9. Arban Modal Scale Pattern



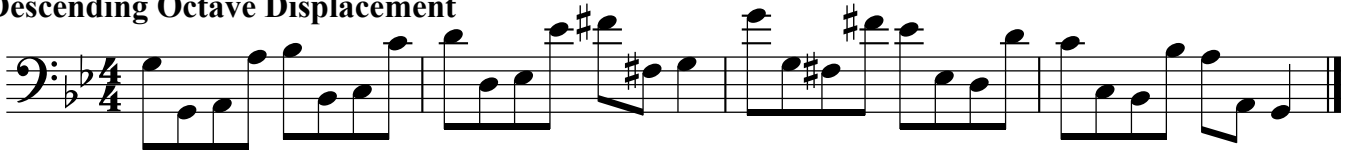
10. Remington Modal Scale Pattern



11. Sixths



12. Descending Octave Displacement



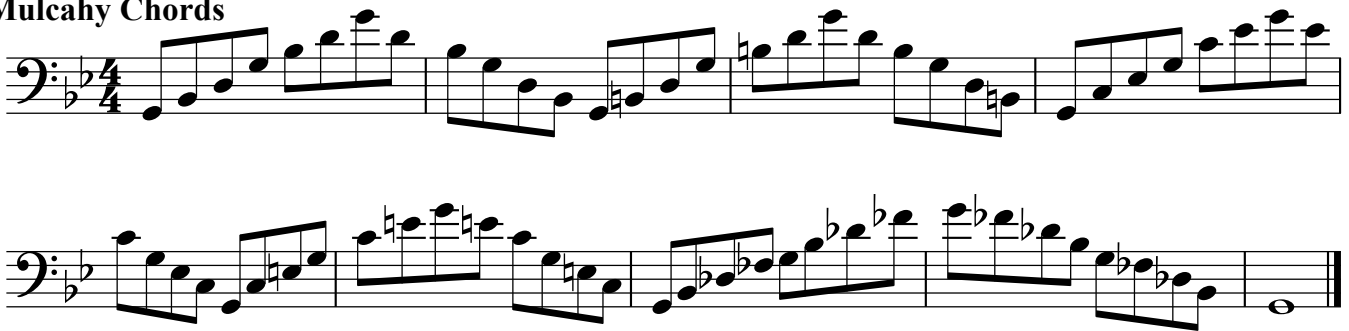
13. Ascending Octave Displacement



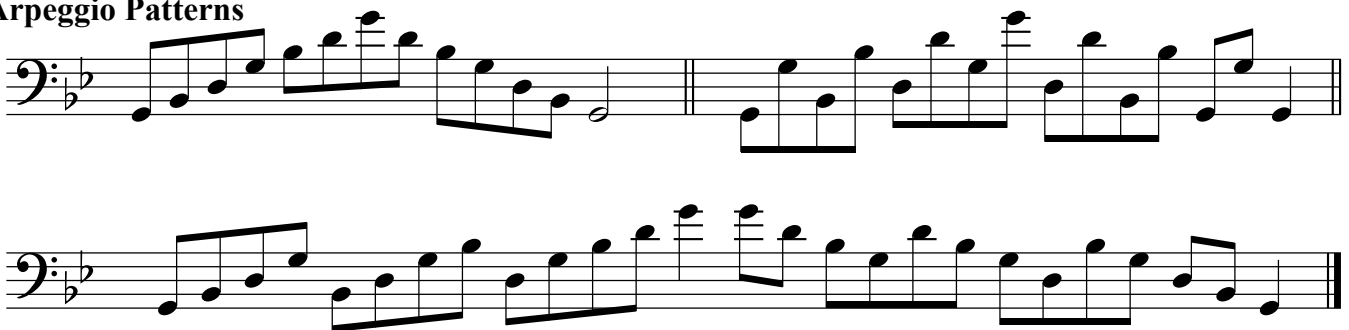
14. Scale in Octaves



15. Mulcahy Chords



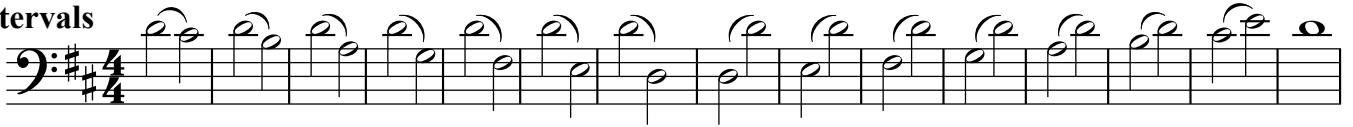
16. Arpeggio Patterns



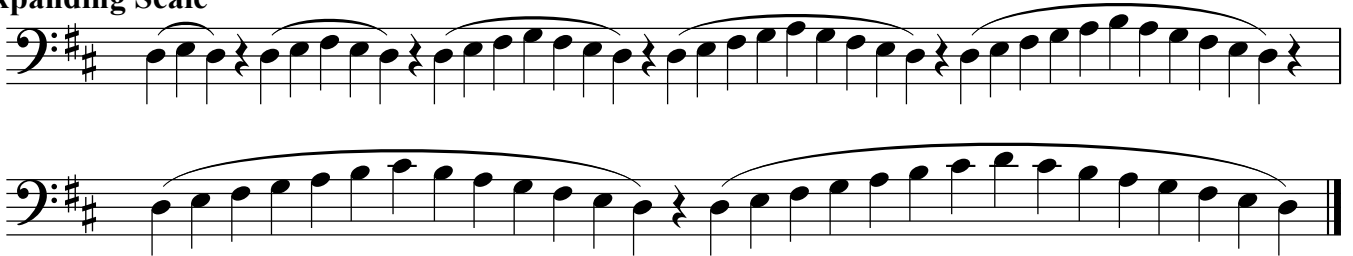
# D Major Scale



## 1. Intervals



## 2. Expanding Scale



## 3. Scale in Thirds



## 4. Triplets



## 5. Clarke Study



## 6. Ascending Intervals



## 7. Descending Intervals



## 8. Arpeggio Patterns



9. Arban Modal Scale Pattern

Four staves of musical notation in bass clef, key of D major (two sharps), and 3/4 time. The pattern consists of a sequence of eighth and sixteenth notes, primarily moving in an ascending direction with some descending passages, characteristic of an Arban-style scale exercise.

10. Remington Modal Scale Pattern

Three staves of musical notation in bass clef, key of D major (two sharps), and 4/4 time. The pattern features a mix of eighth and sixteenth notes, with a more complex rhythmic structure than the Arban pattern, including some triplet-like groupings.

11. Sixths

One staff of musical notation in bass clef, key of D major (two sharps), and 4/4 time. The exercise consists of a single line of eighth notes, where each note is followed by a sixth interval above it, creating a series of sixths.

12. Descending Octave Displacement

One staff of musical notation in bass clef, key of D major (two sharps), and 4/4 time. The exercise shows a descending eighth-note scale with an octave displacement, where the notes drop an octave after a certain point.

13. Ascending Octave Displacement

One staff of musical notation in bass clef, key of D major (two sharps), and 4/4 time. The exercise shows an ascending eighth-note scale with an octave displacement, where the notes rise an octave after a certain point.

14. Scale in Octaves

One staff of musical notation in bass clef, key of D major (two sharps), and 4/4 time. The exercise consists of an eighth-note scale that moves up and down across two octaves.

## 15. Mulcahy Chords

Two staves of music in bass clef, key of D major (two sharps). The first staff contains a sequence of eighth-note chords: D2, E2, F#2, G2, A2, B2, C#3, D3, E3, F#3, G3, A3, B3, C#4, D4. The second staff contains a sequence of eighth-note chords: D3, E3, F#3, G3, A3, B3, C#4, D4, E4, F#4, G4, A4, B4, C#5, D5.

## 16. Arpeggio Patterns

Two staves of music in bass clef, key of D major. The first staff shows two measures of eighth-note arpeggios: D2-E2-F#2-G2-A2-B2-C#3-D3 and E3-F#3-G3-A3-B3-C#4-D4. The second staff shows two measures of eighth-note arpeggios: D3-E3-F#3-G3-A3-B3-C#4-D4 and E4-F#4-G4-A4-B4-C#5-D5.

## B Minor Scale

## Melodic Minor

One staff of music in bass clef, key of B minor (two sharps), 15/4 time signature. The scale is written as: B2, C3, D3, E3, F#3, G3, A3, B3, C#4, D4, E4, F#4, G4, A4, B4.

## Harmonic Minor

One staff of music in bass clef, key of B minor, 15/4 time signature. The scale is written as: B2, C3, D3, E3, F#3, G3, A3, B3, C#4, D4, E4, F#4, G4, A4, B4.

## 1. Intervals

One staff of music in bass clef, key of B minor, 4/4 time signature. The scale is written as: B2, C3, D3, E3, F#3, G3, A3, B3, C#4, D4, E4, F#4, G4, A4, B4.

## 2. Expanding Scale

Two staves of music in bass clef, key of B minor. The first staff shows a scale with expanding intervals: B2, C3, D3, E3, F#3, G3, A3, B3, C#4, D4, E4, F#4, G4, A4, B4. The second staff shows a scale with expanding intervals: B2, C3, D3, E3, F#3, G3, A3, B3, C#4, D4, E4, F#4, G4, A4, B4.

## 3. Scale in Thirds

One staff of music in bass clef, key of B minor, 4/4 time signature. The scale is written as: B2, C3, D3, E3, F#3, G3, A3, B3, C#4, D4, E4, F#4, G4, A4, B4.

## 4. Triplets

One staff of music in bass clef, key of B minor, 12/8 time signature. The scale is written as: B2, C3, D3, E3, F#3, G3, A3, B3, C#4, D4, E4, F#4, G4, A4, B4.

5. Clarke Study

Musical notation for the Clarke Study, featuring a bass clef, a key signature of two sharps (F# and C#), and a 4/4 time signature. The piece consists of a single melodic line with eighth-note patterns and a final whole note.

6. Ascending Intervals

Musical notation for Ascending Intervals, featuring a bass clef, a key signature of two sharps, and a 4/4 time signature. The exercise shows a sequence of ascending intervals: eighth notes, quarter notes, and half notes.

7. Descending Intervals

Musical notation for Descending Intervals, featuring a bass clef, a key signature of two sharps, and a 4/4 time signature. The exercise shows a sequence of descending intervals: quarter notes, eighth notes, and sixteenth notes.

8. Arpeggio Patterns

Musical notation for Arpeggio Patterns, featuring a bass clef, a key signature of two sharps, and a 4/4 time signature. The exercise consists of four measures of arpeggiated chords.

Advanced Patterns

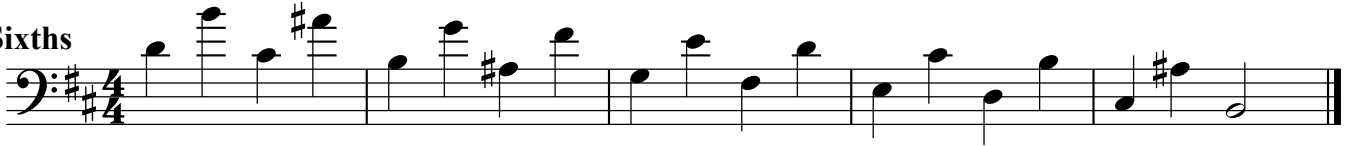
9. Arban Modal Scale Pattern

Musical notation for the Arban Modal Scale Pattern, featuring a bass clef, a key signature of two sharps, and a 3/4 time signature. The exercise is presented in four staves, showing ascending and descending runs with various rhythmic values.

10. Remington Modal Scale Pattern

Musical notation for the Remington Modal Scale Pattern, featuring a bass clef, a key signature of two sharps, and a 4/4 time signature. The exercise is presented in three staves, showing ascending and descending runs with various rhythmic values.

**11. Sixths**



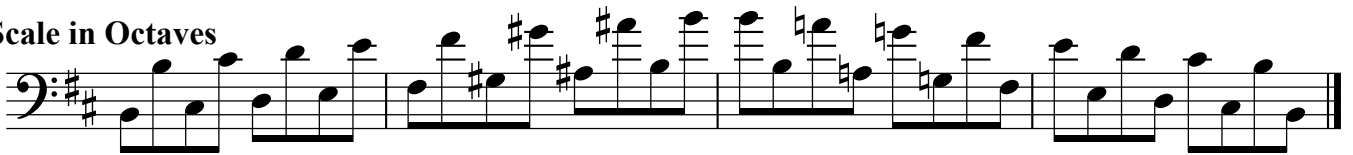
**12. Descending Octave Displacement**



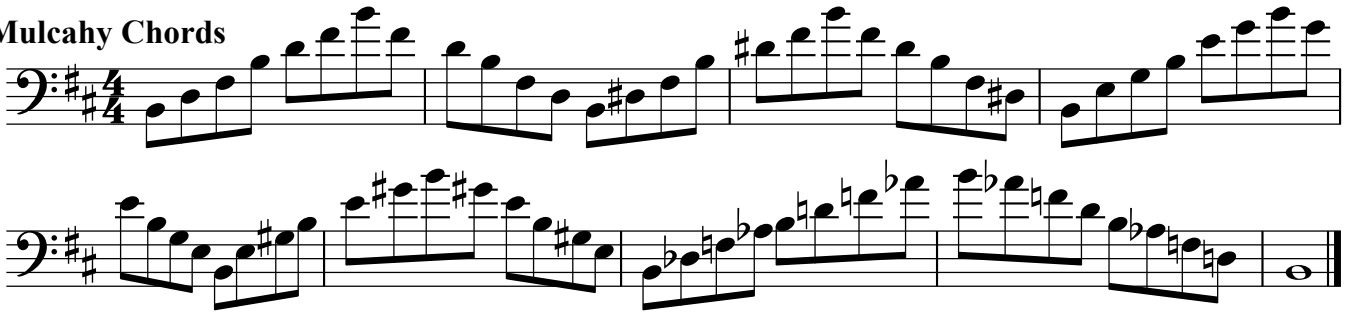
**13. Ascending Octave Displacement**



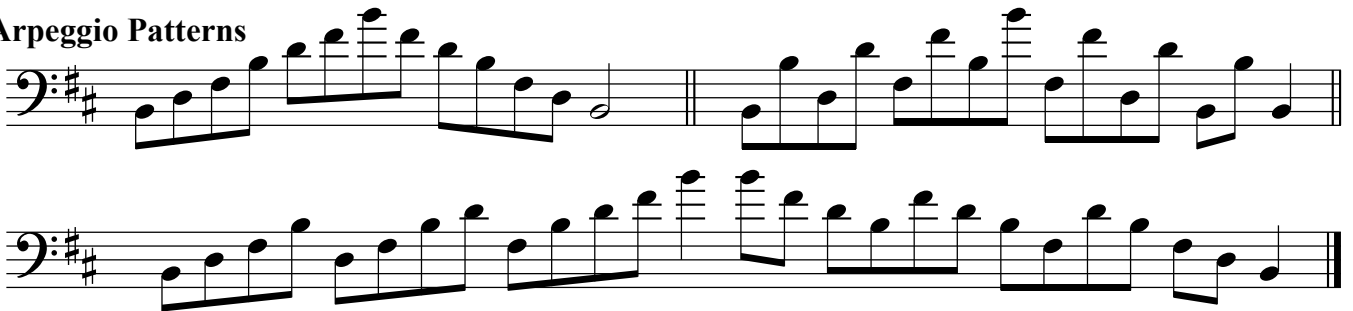
**14. Scale in Octaves**



**15. Mulcahy Chords**



**16. Arpeggio Patterns**



## Eb Major Scale



**1. Intervals**





2. Expanding Scale

Two staves of music in bass clef, key of B-flat major. The first staff contains four measures of eighth-note ascending scales, each with a slur and a fermata at the end. The second staff contains two measures of eighth-note ascending scales, each with a slur and a fermata at the end.

3. Scale in Thirds

One staff of music in bass clef, key of B-flat major, 4/4 time signature. It consists of a single line of eighth-note ascending scales in thirds.

4. Triplets

One staff of music in bass clef, key of B-flat major, 12/8 time signature. It consists of a single line of eighth-note ascending scales in triplets.

5. Clarke Study

One staff of music in bass clef, key of B-flat major, 4/4 time signature. It consists of a single line of eighth-note ascending scales.

6. Ascending Intervals

One staff of music in bass clef, key of B-flat major, 4/4 time signature. It consists of a single line of eighth-note ascending intervals.

7. Descending Intervals

One staff of music in bass clef, key of B-flat major, 4/4 time signature. It consists of a single line of eighth-note descending intervals.

8. Arpeggio Patterns

One staff of music in bass clef, key of B-flat major, 4/4 time signature. It consists of a single line of eighth-note arpeggio patterns.

Advanced Patterns

9. Arban Modal Scale Pattern

Four staves of music in bass clef, key of B-flat major, 3/4 time signature. Each staff contains a line of eighth-note ascending scales.

**10. Remington Modal Scale Pattern**

Three staves of music in bass clef, 4/4 time, key of B-flat major. The first staff shows a complex rhythmic pattern of eighth and sixteenth notes. The second and third staves continue this pattern, with the third staff ending with a whole note rest.

**11. Sixths**

One staff of music in bass clef, 4/4 time, key of B-flat major. The melody consists of a sequence of eighth notes, each followed by a sixteenth rest, creating a dotted eighth note effect.

**12. Descending Octave Displacement**

One staff of music in bass clef, 4/4 time, key of B-flat major. The melody features a descending eighth-note line with a descending octave displacement every two notes.

**13. Ascending Octave Displacement**

One staff of music in bass clef, 4/4 time, key of B-flat major. The melody features an ascending eighth-note line with an ascending octave displacement every two notes.

**14. Scale in Octaves**

One staff of music in bass clef, 4/4 time, key of B-flat major. The melody consists of a continuous eighth-note scale with an octave displacement every two notes.

**15. Mulcahy Chords**

Two staves of music in bass clef, 4/4 time, key of B-flat major. The first staff shows a sequence of chords with eighth-note accompaniment. The second staff continues the sequence with more complex chordal textures.

**16. Arpeggio Patterns**

Two staves of music in bass clef, 4/4 time, key of B-flat major. The first staff shows a sequence of arpeggiated chords. The second staff continues with more complex arpeggiated patterns.

# C Minor Scale

## Melodic Minor



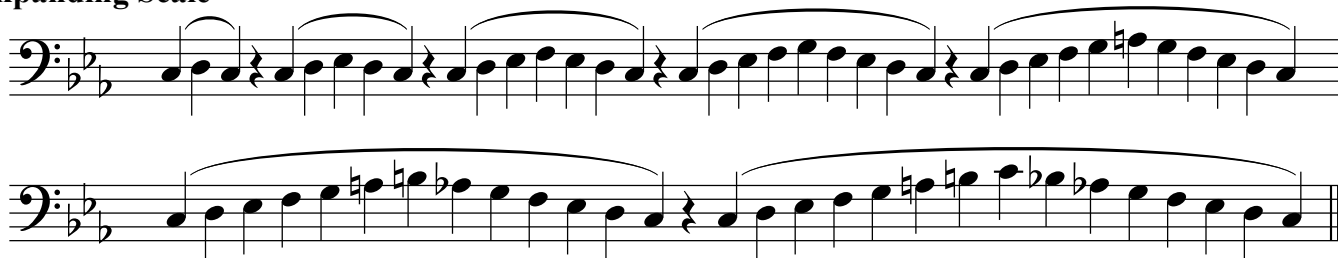
## Harmonic Minor



## 1. Intervals



## 2. Expanding Scale



## 3. Scale in Thirds



## 4. Triplets



## 5. Clarke Study



## 6. Ascending Intervals



## 7. Descending Intervals



## 8. Arpeggio Patterns



## Advanced Patterns

## 9. Arban Modal Scale Pattern

Arban Modal Scale Pattern: A bass clef staff in 3/4 time, key of B-flat major. The pattern consists of four lines of music. The first line shows an ascending eighth-note scale: B-flat, C, D, E-flat, F, G, A, B-flat. The second line shows a descending eighth-note scale: B-flat, A, G, F, E-flat, D, C, B-flat. The third line shows an ascending eighth-note scale: B-flat, C, D, E-flat, F, G, A, B-flat. The fourth line shows a descending eighth-note scale: B-flat, A, G, F, E-flat, D, C, B-flat.

## 10. Remington Modal Scale Pattern

Remington Modal Scale Pattern: A bass clef staff in 4/4 time, key of B-flat major. The pattern consists of three lines of music. The first line shows an ascending eighth-note scale: B-flat, C, D, E-flat, F, G, A, B-flat. The second line shows a descending eighth-note scale: B-flat, A, G, F, E-flat, D, C, B-flat. The third line shows an ascending eighth-note scale: B-flat, C, D, E-flat, F, G, A, B-flat.

## 11. Sixths

Sixths: A bass clef staff in 4/4 time, key of B-flat major. The pattern consists of a single line of music showing a sequence of sixths: B-flat, C, D, E-flat, F, G, A, B-flat.

## 12. Descending Octave Displacement

Descending Octave Displacement: A bass clef staff in 4/4 time, key of B-flat major. The pattern consists of a single line of music showing a descending eighth-note scale with octave displacement: B-flat, A, G, F, E-flat, D, C, B-flat.

## 13. Ascending Octave Displacement

Ascending Octave Displacement: A bass clef staff in 4/4 time, key of B-flat major. The pattern consists of a single line of music showing an ascending eighth-note scale with octave displacement: B-flat, C, D, E-flat, F, G, A, B-flat.

## 14. Scale in Octaves

Scale in Octaves: A bass clef staff in 4/4 time, key of B-flat major. The pattern consists of a single line of music showing a sequence of octaves: B-flat, C, D, E-flat, F, G, A, B-flat.

15. Mulcahy Chords

Two staves of music in bass clef, 4/4 time, key of B-flat major. The first staff contains a sequence of chords: B-flat major, F major, C major, G major, D major, A-flat major, E-flat major, and B-flat major. The second staff continues with: F major, C major, G major, D major, A-flat major, E-flat major, B-flat major, and ends with a whole note B-flat major chord.

16. Arpeggio Patterns

Two staves of music in bass clef, 4/4 time, key of B-flat major. The first staff shows arpeggiated chords: B-flat major, F major, C major, G major, D major, A-flat major, E-flat major, and B-flat major. The second staff continues with: F major, C major, G major, D major, A-flat major, E-flat major, B-flat major, and ends with a whole note B-flat major chord.

# A Major Scale

A single staff of music in bass clef, 4/4 time, key of A major. It shows the A major scale: A, B, C, D, E, F#, G, A, B, C, D, E, F#, G, A.

1. Intervals

A single staff of music in bass clef, 4/4 time, key of A major. It shows pairs of notes representing intervals: A-B, B-C, C-D, D-E, E-F#, F#-G, G-A, A-B, B-C, C-D, D-E, E-F#, F#-G, G-A.

2. Expanding Scale

Two staves of music in bass clef, 4/4 time, key of A major. The first staff shows the scale with expanding intervals: A-B, B-C, C-D, D-E, E-F#, F#-G, G-A, A-B, B-C, C-D, D-E, E-F#, F#-G, G-A. The second staff shows the scale with further expanding intervals: A-B, B-C, C-D, D-E, E-F#, F#-G, G-A, A-B, B-C, C-D, D-E, E-F#, F#-G, G-A, A-B, B-C, C-D, D-E, E-F#, F#-G, G-A.

3. Scale in Thirds

A single staff of music in bass clef, 4/4 time, key of A major. It shows the scale in thirds: A-B, B-C, C-D, D-E, E-F#, F#-G, G-A, A-B, B-C, C-D, D-E, E-F#, F#-G, G-A.

4. Triplets

A single staff of music in bass clef, 12/8 time, key of A major. It shows the scale in triplets: A-B-C, B-C-D, C-D-E, D-E-F#, E-F#-G, F#-G-A, G-A-B, A-B-C, B-C-D, C-D-E, D-E-F#, E-F#-G, F#-G-A.

5. Clarke Study

A single staff of music in bass clef, 4/4 time, key of A major. It shows a study of the scale: A-B-C-D-E-F#-G-A, B-C-D-E-F#-G-A, C-D-E-F#-G-A, D-E-F#-G-A, E-F#-G-A, F#-G-A, G-A, A.

6. Ascending Intervals

Musical notation for Ascending Intervals in bass clef, key of D major (two sharps), and 4/4 time. The piece consists of a single line of music with four measures. Each measure contains a pair of eighth notes, with the second note being a higher interval from the first. The intervals are: a second (D4-E4), a third (D4-F4), a fourth (D4-G4), and a fifth (D4-A4).

7. Descending Intervals

Musical notation for Descending Intervals in bass clef, key of D major (two sharps), and 4/4 time. The piece consists of a single line of music with four measures. Each measure contains a pair of eighth notes, with the second note being a lower interval from the first. The intervals are: a second (D4-C4), a third (D4-B3), a fourth (D4-A3), and a fifth (D4-G3).

8. Arpeggio Patterns

Musical notation for Arpeggio Patterns in bass clef, key of D major (two sharps), and 4/4 time. The piece consists of a single line of music with four measures. Each measure contains a pair of eighth notes, with the second note being a higher interval from the first. The intervals are: a second (D4-E4), a third (D4-F4), a fourth (D4-G4), and a fifth (D4-A4).

Advanced Patterns

9. Arban Modal Scale Pattern

Musical notation for Arban Modal Scale Pattern in bass clef, key of D major (two sharps), and 3/4 time. The piece consists of four lines of music. Each line contains a pair of eighth notes, with the second note being a higher interval from the first. The intervals are: a second (D4-E4), a third (D4-F4), a fourth (D4-G4), and a fifth (D4-A4).

10. Remington Modal Scale Pattern

Musical notation for Remington Modal Scale Pattern in bass clef, key of D major (two sharps), and 4/4 time. The piece consists of three lines of music. Each line contains a pair of eighth notes, with the second note being a higher interval from the first. The intervals are: a second (D4-E4), a third (D4-F4), a fourth (D4-G4), and a fifth (D4-A4).

11. Sixths

Musical notation for Sixths in bass clef, key of D major (two sharps), and 4/4 time. The piece consists of a single line of music with four measures. Each measure contains a pair of eighth notes, with the second note being a higher interval from the first. The intervals are: a second (D4-E4), a third (D4-F4), a fourth (D4-G4), and a fifth (D4-A4).

12. Descending Octave Displacement

13. Ascending Octave Displacement

14. Scale in Octaves

15. Mulcahy Chords

16. Arpeggio Patterns

# F# Minor Scale

Melodic Minor

Harmonic Minor

1. Intervals

2. Expanding Scale

3. Scale in Thirds

4. Triplets

5. Clarke Study

6. Ascending Intervals

7. Descending Intervals

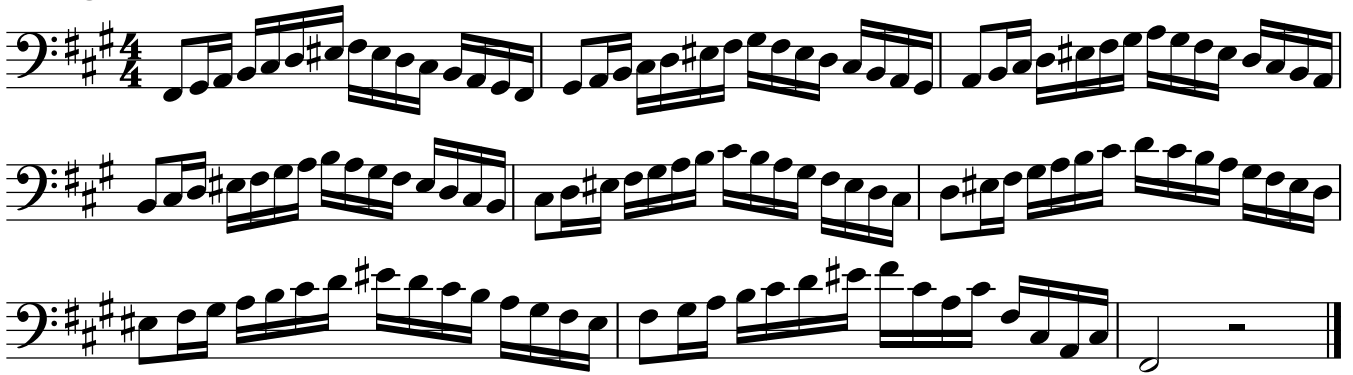
8. Arpeggio Patterns

Advanced Patterns

9. Arban Modal Scale Pattern



10. Remington Modal Scale Pattern



Three staves of music in bass clef, 4/4 time, key of D major. The first staff contains a complex, fast-paced scale pattern with many sixteenth notes. The second staff continues this pattern. The third staff concludes the pattern with a final note and a bar line.

11. Sixths



One staff of music in bass clef, 4/4 time, key of D major. The melody consists of eighth notes, with a second line of notes played an octave higher than the first line, creating a sixteenth-note interval.

12. Descending Octave Displacement



One staff of music in bass clef, 4/4 time, key of D major. The melody consists of eighth notes that descend in pitch, with the second line of notes an octave lower than the first line.

13. Ascending Octave Displacement



One staff of music in bass clef, 4/4 time, key of D major. The melody consists of eighth notes that ascend in pitch, with the second line of notes an octave higher than the first line.

14. Scale in Octaves



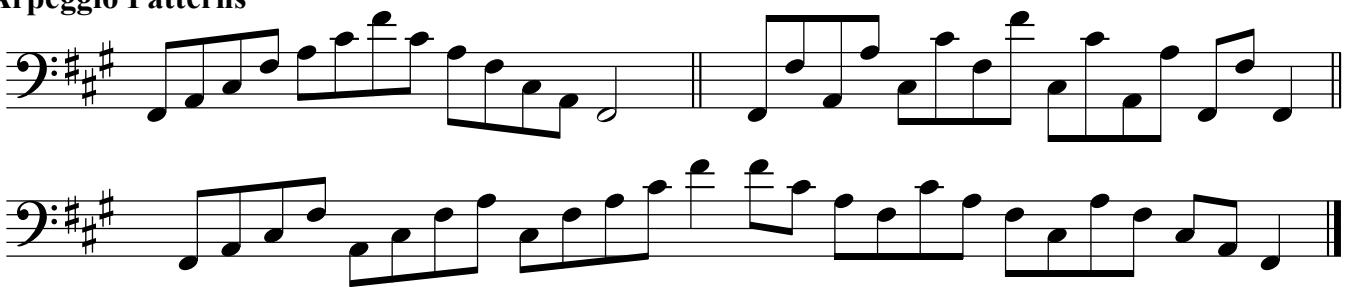
One staff of music in bass clef, 4/4 time, key of D major. The melody consists of eighth notes that ascend and then descend, with the second line of notes an octave higher than the first line.

15. Mulcahy Chords



Two staves of music in bass clef, 4/4 time, key of D major. The first staff contains a sequence of chords and eighth notes. The second staff continues the sequence with more complex chordal textures.

16. Arpeggio Patterns



Two staves of music in bass clef, 4/4 time, key of D major. The first staff contains a sequence of arpeggiated chords. The second staff continues the sequence with more complex arpeggiated textures.

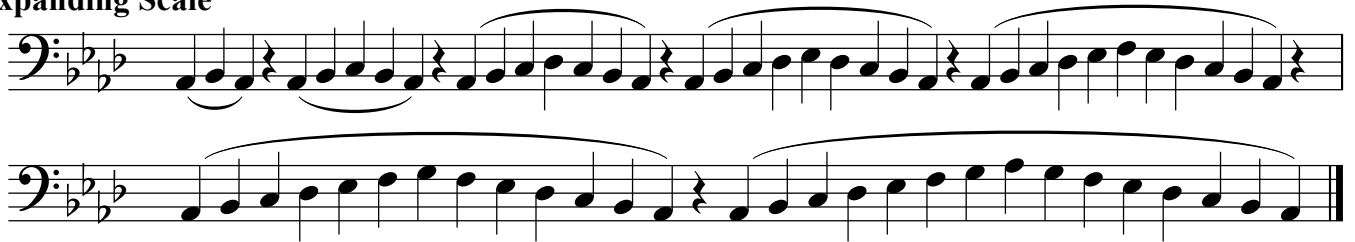
# A $\flat$ Major Scale



## 1. Intervals



## 2. Expanding Scale



## 3. Scale in Thirds



## 4. Triplets



## 5. Clarke Study



## 6. Ascending Intervals



## 7. Descending Intervals

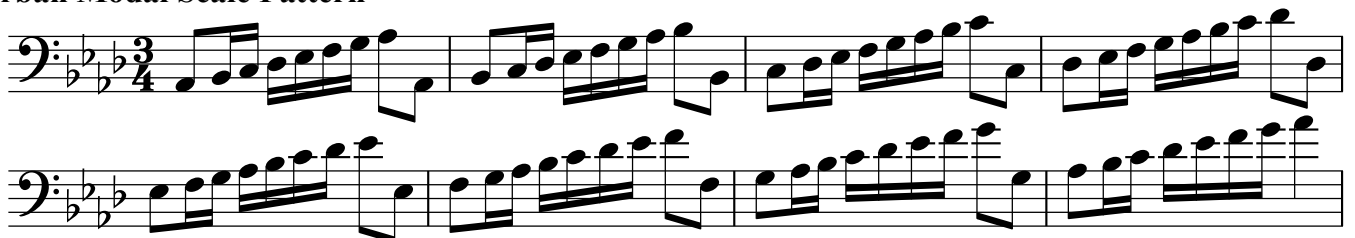


## 8. Arpeggio Patterns



## Advanced Patterns

### 9. Arban Modal Scale Pattern



Two staves of musical notation in bass clef, 3/4 time, key of B-flat major. The first staff contains a continuous eighth-note pattern. The second staff contains a similar pattern with some rests and a final quarter note.

**10. Remington Modal Scale Pattern**

Three staves of musical notation in bass clef, 4/4 time, key of B-flat major. The notation features a complex modal scale pattern with many beamed eighth notes.

**11. Sixths**

One staff of musical notation in bass clef, 4/4 time, key of B-flat major. The notation shows a sequence of chords, each consisting of a pair of notes separated by a sixth interval.

**12. Descending Octave Displacement**

One staff of musical notation in bass clef, 3/4 time, key of B-flat major. The notation shows a descending scale with octave displacement, where notes are repeated an octave lower.

**13. Ascending Octave Displacement**

One staff of musical notation in bass clef, 3/4 time, key of B-flat major. The notation shows an ascending scale with octave displacement, where notes are repeated an octave higher.

**14. Scale in Octaves**

One staff of musical notation in bass clef, 3/4 time, key of B-flat major. The notation shows a scale where notes are repeated an octave higher and lower.

**15. Mulcahy Chords**

Two staves of musical notation in bass clef, 3/4 time, key of B-flat major. The notation shows a sequence of chords with various intervals and accidentals.

### 16. Arpeggio Patterns

Two staves of arpeggio patterns in F minor, 4/4 time. The first staff shows ascending and descending eighth-note arpeggios. The second staff shows a more complex pattern with slurs and ties.

## F Minor Scale

### Melodic Minor

Melodic minor scale in F minor, 4/4 time, marked with a 15-measure rest.

### Harmonic Minor

Harmonic minor scale in F minor, 4/4 time, marked with a 15-measure rest.

### 1. Intervals

Interval exercises in F minor, 4/4 time, showing pairs of notes.

### 2. Expanding Scale

Expanding scale exercises in F minor, 4/4 time, with slurs and ties.

### 3. Scale in Thirds

Scale in thirds in F minor, 4/4 time.

### 4. Triplets

Triplet exercises in F minor, 12/8 time.

### 5. Clarke Study

Clarke Study in F minor, 4/4 time.

### 6. Ascending Intervals

Ascending interval exercises in F minor, 4/4 time.

### 7. Descending Intervals



### 8. Arpeggio Patterns

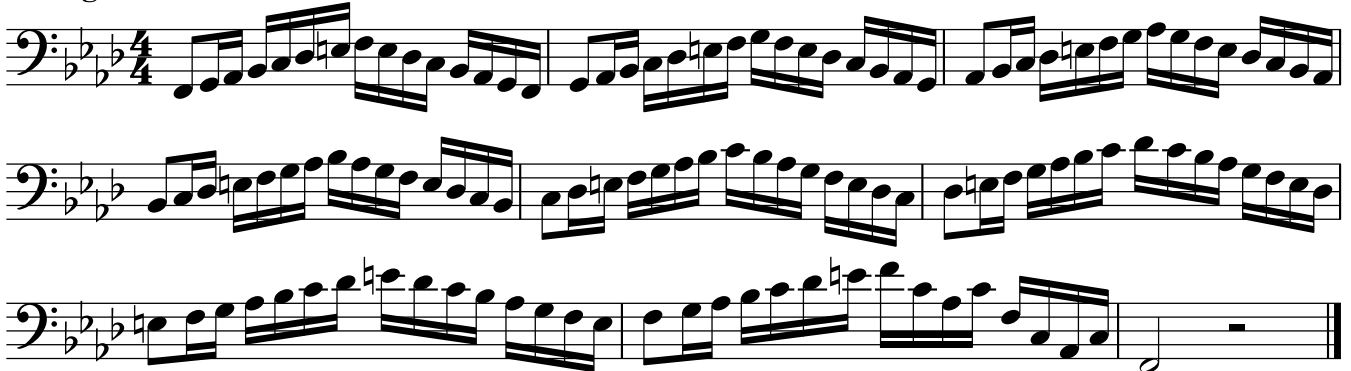


### 9. Arban Modal Scale Pattern

### Advanced Patterns



### 10. Remington Modal Scale Pattern



### 11. Sixths



### 12. Descending Octave Displacement



13. Ascending Octave Displacement

14. Scale in Octaves

15. Mulcahy Chords

16. Arpeggio Patterns

## E Major Scale

1. Intervals

2. Expanding Scale

3. Scale in Thirds

Musical notation for Scale in Thirds, bass clef, key signature of three sharps (F#, C#, G#), 4/4 time signature. The piece consists of a single line of music with a series of eighth-note pairs, each pair forming a third (e.g., F# and A, C# and E, G# and B).

4. Triplets

Musical notation for Triplets, bass clef, key signature of three sharps (F#, C#, G#), 12/8 time signature. The piece consists of a single line of music with eighth-note triplets.

5. Clarke Study

Musical notation for Clarke Study, bass clef, key signature of three sharps (F#, C#, G#), 4/4 time signature. The piece consists of a single line of music with eighth-note patterns.

6. Ascending Intervals

Musical notation for Ascending Intervals, bass clef, key signature of three sharps (F#, C#, G#), 4/4 time signature. The piece consists of a single line of music with ascending eighth-note intervals.

7. Descending Intervals

Musical notation for Descending Intervals, bass clef, key signature of three sharps (F#, C#, G#), 4/4 time signature. The piece consists of a single line of music with descending eighth-note intervals.

8. Arpeggio Patterns

Musical notation for Arpeggio Patterns, bass clef, key signature of three sharps (F#, C#, G#), 4/4 time signature. The piece consists of a single line of music with arpeggiated eighth-note patterns.

Advanced Patterns

9. Arban Modal Scale Pattern

Musical notation for Arban Modal Scale Pattern, bass clef, key signature of three sharps (F#, C#, G#), 3/4 time signature. The piece consists of four lines of music with complex eighth-note patterns.

**10. Remington Modal Scale Pattern**

Three staves of music in bass clef, key of D major (two sharps), and 4/4 time. The first staff contains a complex, fast-paced scale pattern with many beamed eighth and sixteenth notes. The second staff continues this pattern. The third staff concludes the pattern with a final note and a fermata.

**11. Sixths**

One staff of music in bass clef, key of D major, and 4/4 time. The melody consists of a series of eighth notes, each followed by a sixteenth rest and then a sixteenth note, creating a rhythmic pattern of eighth and sixteenth notes.

**12. Descending Octave Displacement**

One staff of music in bass clef, key of D major, and 4/4 time. The melody starts on a high note and descends in a series of eighth notes, with each note moving down an octave from the previous one.

**13. Ascending Octave Displacement**

One staff of music in bass clef, key of D major, and 4/4 time. The melody starts on a low note and ascends in a series of eighth notes, with each note moving up an octave from the previous one.

**14. Scale in Octaves**

One staff of music in bass clef, key of D major, and 4/4 time. The melody consists of a series of eighth notes, each followed by a sixteenth rest and then a sixteenth note, with each note moving up an octave from the previous one.

**15. Mulcahy Chords**

Two staves of music in bass clef, key of D major, and 4/4 time. The first staff shows a series of chords, each followed by a sixteenth rest and then a sixteenth note. The second staff continues this pattern with more complex chordal structures.

**16. Arpeggio Patterns**

Two staves of music in bass clef, key of D major, and 4/4 time. The first staff shows a series of arpeggiated chords, each followed by a sixteenth rest and then a sixteenth note. The second staff continues this pattern with more complex arpeggiated structures.



# C# Minor Scale

## Melodic Minor



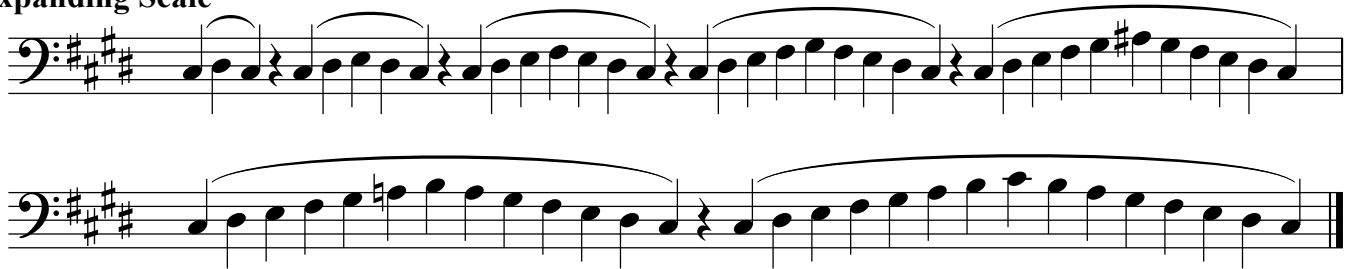
## Harmonic Minor



## 1. Intervals



## 2. Expanding Scale



## 3. Scale in Thirds



## 4. Triplets



## 5. Clarke Study



## 6. Ascending Intervals



## 7. Descending Intervals



## 8. Arpeggio Patterns



## Advanced Patterns

## 9. Arban Modal Scale Pattern

Arban Modal Scale Pattern: A bass clef staff in 3/4 time with a key signature of three sharps (F#, C#, G#). The pattern consists of four measures of eighth-note runs. The first measure is an ascending eighth-note scale: C4, D4, E4, F#4, G4, A4, B4, C5. The second measure is a descending eighth-note scale: C5, B4, A4, G4, F#4, E4, D4, C4. The third measure is an ascending eighth-note scale: C4, D4, E4, F#4, G4, A4, B4, C5. The fourth measure is a descending eighth-note scale: C5, B4, A4, G4, F#4, E4, D4, C4.

## 10. Remington Modal Scale Pattern

Remington Modal Scale Pattern: A bass clef staff in 4/4 time with a key signature of three sharps (F#, C#, G#). The pattern consists of three measures of eighth-note runs. The first measure is an ascending eighth-note scale: C4, D4, E4, F#4, G4, A4, B4, C5. The second measure is a descending eighth-note scale: C5, B4, A4, G4, F#4, E4, D4, C4. The third measure is an ascending eighth-note scale: C4, D4, E4, F#4, G4, A4, B4, C5.

## 11. Sixths

Sixths: A bass clef staff in 4/4 time with a key signature of three sharps (F#, C#, G#). The pattern consists of a single measure of eighth-note runs: C4, D4, E4, F#4, G4, A4, B4, C5.

## 12. Descending Octave Displacement

Descending Octave Displacement: A bass clef staff in 4/4 time with a key signature of three sharps (F#, C#, G#). The pattern consists of four measures of eighth-note runs. The first measure is an ascending eighth-note scale: C4, D4, E4, F#4, G4, A4, B4, C5. The second measure is a descending eighth-note scale: C5, B4, A4, G4, F#4, E4, D4, C4. The third measure is an ascending eighth-note scale: C4, D4, E4, F#4, G4, A4, B4, C5. The fourth measure is a descending eighth-note scale: C5, B4, A4, G4, F#4, E4, D4, C4.

## 13. Ascending Octave Displacement

Ascending Octave Displacement: A bass clef staff in 4/4 time with a key signature of three sharps (F#, C#, G#). The pattern consists of four measures of eighth-note runs. The first measure is an ascending eighth-note scale: C4, D4, E4, F#4, G4, A4, B4, C5. The second measure is a descending eighth-note scale: C5, B4, A4, G4, F#4, E4, D4, C4. The third measure is an ascending eighth-note scale: C4, D4, E4, F#4, G4, A4, B4, C5. The fourth measure is a descending eighth-note scale: C5, B4, A4, G4, F#4, E4, D4, C4.

## 14. Scale in Octaves

Scale in Octaves: A bass clef staff in 4/4 time with a key signature of three sharps (F#, C#, G#). The pattern consists of four measures of eighth-note runs. The first measure is an ascending eighth-note scale: C4, D4, E4, F#4, G4, A4, B4, C5. The second measure is a descending eighth-note scale: C5, B4, A4, G4, F#4, E4, D4, C4. The third measure is an ascending eighth-note scale: C4, D4, E4, F#4, G4, A4, B4, C5. The fourth measure is a descending eighth-note scale: C5, B4, A4, G4, F#4, E4, D4, C4.

15. Mulcahy Chords

Two staves of music in G major, 4/4 time. The first staff contains a sequence of chords: G4, A4, B4, C5, D5, E5, F#5, G5, A5, B5, C6, D6, E6, F#6, G6. The second staff contains a sequence of chords: G4, A4, B4, C5, D5, E5, F#5, G5, A5, B5, C6, D6, E6, F#6, G6, with a final G4 chord.

16. Arpeggio Patterns

Two staves of music in G major, 4/4 time. The first staff shows arpeggiated chords: G4, A4, B4, C5, D5, E5, F#5, G5, A5, B5, C6, D6, E6, F#6, G6. The second staff shows arpeggiated chords: G4, A4, B4, C5, D5, E5, F#5, G5, A5, B5, C6, D6, E6, F#6, G6.

### D $\flat$ Major Scale

One staff of music in D $\flat$  major, 4/4 time. The scale is written as: D $\flat$ 4, E $\flat$ 4, F $\flat$ 4, G $\flat$ 4, A $\flat$ 4, B $\flat$ 4, C $\flat$ 5, D5, E5, F5, G5, A5, B5, C6, D6.

1. Intervals

One staff of music in D $\flat$  major, 4/4 time. The scale is written as: D $\flat$ 4, E $\flat$ 4, F $\flat$ 4, G $\flat$ 4, A $\flat$ 4, B $\flat$ 4, C $\flat$ 5, D5, E5, F5, G5, A5, B5, C6, D6. Each note is followed by a pair of eighth notes representing intervals.

2. Expanding Scale

Two staves of music in D $\flat$  major, 4/4 time. The first staff shows the scale with expanding intervals: D $\flat$ 4, E $\flat$ 4, F $\flat$ 4, G $\flat$ 4, A $\flat$ 4, B $\flat$ 4, C $\flat$ 5, D5, E5, F5, G5, A5, B5, C6, D6. The second staff shows the scale with expanding intervals: D $\flat$ 4, E $\flat$ 4, F $\flat$ 4, G $\flat$ 4, A $\flat$ 4, B $\flat$ 4, C $\flat$ 5, D5, E5, F5, G5, A5, B5, C6, D6.

3. Scale in Thirds

One staff of music in D $\flat$  major, 4/4 time. The scale is written as: D $\flat$ 4, E $\flat$ 4, F $\flat$ 4, G $\flat$ 4, A $\flat$ 4, B $\flat$ 4, C $\flat$ 5, D5, E5, F5, G5, A5, B5, C6, D6.

4. Triplets

One staff of music in D $\flat$  major, 4/4 time. The scale is written as: D $\flat$ 4, E $\flat$ 4, F $\flat$ 4, G $\flat$ 4, A $\flat$ 4, B $\flat$ 4, C $\flat$ 5, D5, E5, F5, G5, A5, B5, C6, D6. Each note is followed by a triplet of eighth notes.

5. Clarke Study

One staff of music in D $\flat$  major, 4/4 time. The scale is written as: D $\flat$ 4, E $\flat$ 4, F $\flat$ 4, G $\flat$ 4, A $\flat$ 4, B $\flat$ 4, C $\flat$ 5, D5, E5, F5, G5, A5, B5, C6, D6.

6. Ascending Intervals

One staff of music in D $\flat$  major, 4/4 time. The scale is written as: D $\flat$ 4, E $\flat$ 4, F $\flat$ 4, G $\flat$ 4, A $\flat$ 4, B $\flat$ 4, C $\flat$ 5, D5, E5, F5, G5, A5, B5, C6, D6.

7. Descending Intervals

8. Arpeggio Patterns

Advanced Patterns

9. Arban Modal Scale Pattern

10. Remington Modal Scale Pattern

11. Sixths

12. Descending Octave Displacement

13. Ascending Octave Displacement

14. Scale in Octaves

15. Mulcahy Chords

16. Arpeggio Patterns

## B $\flat$ Minor Scale

Melodic Minor

Harmonic Minor

1. Intervals

2. Expanding Scale

## 3. Scale in Thirds



## 4. Triplets



## 5. Clarke Study



## 6. Ascending Intervals



## 7. Descending Intervals

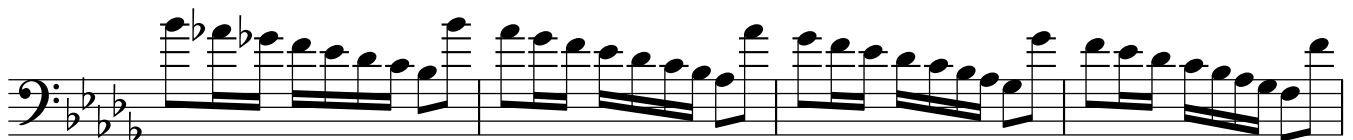


## 8. Arpeggio Patterns



## 9. Arban Modal Scale Pattern

## Advanced Patterns



10. Remington Modal Scale Pattern

Three staves of music in bass clef, 4/4 time, key of B-flat major. The first staff shows a complex rhythmic pattern with eighth and sixteenth notes. The second and third staves continue the pattern with similar rhythmic structures, ending with a whole note chord.

11. Sixths

One staff of music in bass clef, 4/4 time, key of B-flat major. The melody consists of eighth notes, with a pair of sixths (a pair of notes a sixth apart) appearing in the first two measures.

12. Descending Octave Displacement

One staff of music in bass clef, 4/4 time, key of B-flat major. The melody features a descending line of eighth notes, with the second measure of each pair of notes being an octave lower than the first.

13. Ascending Octave Displacement

One staff of music in bass clef, 4/4 time, key of B-flat major. The melody features an ascending line of eighth notes, with the second measure of each pair of notes being an octave higher than the first.

14. Scale in Octaves

One staff of music in bass clef, 4/4 time, key of B-flat major. The melody consists of eighth notes, with the second measure of each pair of notes being an octave higher than the first.

15. Mulcahy Chords

Two staves of music in bass clef, 4/4 time, key of B-flat major. The first staff shows a sequence of chords and eighth notes. The second staff continues the sequence with more complex chordal structures and eighth notes.

16. Arpeggio Patterns

Two staves of music in bass clef, 4/4 time, key of B-flat major. The first staff shows a sequence of arpeggiated chords. The second staff continues the sequence with more complex arpeggiated patterns.

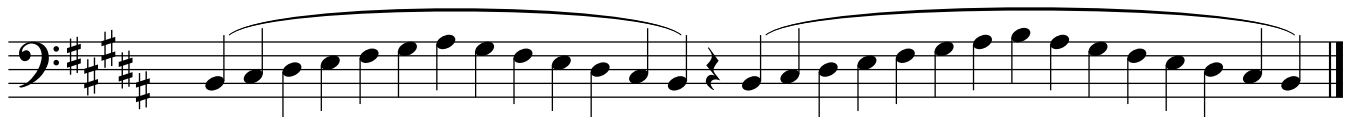
# B Major Scale



## 1. Intervals



## 2. Expanding Scale



## 3. Scale in Thirds



## 4. Triplets



## 5. Clarke Study



## 6. Ascending Intervals



## 7. Descending Intervals



## 8. Arpeggio Patterns





9. Arban Modal Scale Pattern

Four staves of musical notation in bass clef, key of D major (two sharps), and 3/4 time signature. The pattern consists of a sequence of eighth and sixteenth notes, primarily moving in an ascending direction with some descending passages, characteristic of Arban's style.

10. Remington Modal Scale Pattern

Three staves of musical notation in bass clef, key of D major (two sharps), and 4/4 time signature. The pattern features a mix of eighth and sixteenth notes, with a prominent ascending line in the first two staves and a descending line in the third staff.

11. Sixths

One staff of musical notation in bass clef, key of D major (two sharps), and 4/4 time signature. The pattern consists of a sequence of notes with a sixth interval between them, moving in an ascending direction.

12. Descending Octave Displacement

One staff of musical notation in bass clef, key of D major (two sharps). The pattern shows a descending sequence of notes where the interval between notes is an octave, creating a descending line.

13. Ascending Octave Displacement

One staff of musical notation in bass clef, key of D major (two sharps). The pattern shows an ascending sequence of notes where the interval between notes is an octave, creating an ascending line.

14. Scale in Octaves

One staff of musical notation in bass clef, key of D major (two sharps). The pattern shows a scale in octaves, with notes moving up and down in an octave interval.

15. Mulcahy Chords

Musical notation for Mulcahy Chords in G# minor, 12/8 time signature, two staves. The first staff contains two measures of eighth-note chords, and the second staff contains two measures of eighth-note chords.

16. Arpeggio Patterns

Musical notation for Arpeggio Patterns in G# minor, 12/8 time signature, two staves. The first staff contains two measures of eighth-note arpeggios, and the second staff contains two measures of eighth-note arpeggios.

# G# Minor Scale

Melodic Minor

Musical notation for Melodic Minor scale in G# minor, 15/4 time signature. The scale is written on a single staff with a treble clef and a key signature of two sharps (F# and C#).

Harmonic Minor

Musical notation for Harmonic Minor scale in G# minor, 15/4 time signature. The scale is written on a single staff with a treble clef and a key signature of two sharps (F# and C#).

1. Intervals

Musical notation for Intervals in G# minor, 4/4 time signature. The scale is written on a single staff with a treble clef and a key signature of two sharps (F# and C#).

2. Expanding Scale

Musical notation for Expanding Scale in G# minor, two staves. The scale is written on two staves with a treble clef and a key signature of two sharps (F# and C#).

3. Scale in Thirds

Musical notation for Scale in Thirds in G# minor, 4/4 time signature. The scale is written on a single staff with a treble clef and a key signature of two sharps (F# and C#).

4. Triplets

Musical notation for Triplets in G# minor, 12/8 time signature. The scale is written on a single staff with a treble clef and a key signature of two sharps (F# and C#).

5. Clarke Study

Musical notation for the Clarke Study, featuring a bass clef, a key signature of three sharps (F#, C#, G#), and a 4/4 time signature. The piece consists of a single melodic line with eighth-note patterns and some rests.

6. Ascending Intervals

Musical notation for Ascending Intervals, featuring a bass clef, a key signature of three sharps, and a 4/4 time signature. The exercise focuses on ascending eighth-note intervals with some notes marked with an asterisk.

7. Descending Intervals

Musical notation for Descending Intervals, featuring a bass clef, a key signature of three sharps, and a 4/4 time signature. The exercise focuses on descending eighth-note intervals with some notes marked with an asterisk.

8. Arpeggio Patterns

Musical notation for Arpeggio Patterns, featuring a bass clef, a key signature of three sharps, and a 4/4 time signature. The exercise consists of four measures of arpeggiated eighth-note patterns.

Advanced Patterns

9. Arban Modal Scale Pattern

Musical notation for the Arban Modal Scale Pattern, featuring a bass clef, a key signature of three sharps, and a 3/4 time signature. It consists of four staves of complex, fast-moving eighth-note patterns.

10. Remington Modal Scale Pattern

Musical notation for the Remington Modal Scale Pattern, featuring a bass clef, a key signature of three sharps, and a 4/4 time signature. It consists of three staves of complex, fast-moving eighth-note patterns.

11. Sixths

12. Descending Octave Displacement

13. Ascending Octave Displacement

14. Scale in Octaves

15. Mulcahy Chords

16. Arpeggio Patterns

## G $\flat$ Major Scale

1. Intervals

2. Expanding Scale

3. Scale in Thirds

4. Triplets

5. Clarke Study

6. Ascending Intervals

7. Descending Intervals

8. Arpeggio Patterns

Advanced Patterns

9. Arban Modal Scale Pattern

**10. Remington Modal Scale Pattern**

Three staves of music in bass clef, 4/4 time, and a key signature of three flats (B-flat, E-flat, A-flat). The first staff contains a sequence of eighth-note chords. The second and third staves show a similar sequence of eighth-note chords, with the third staff ending with a whole note chord.

**11. Sixths**

One staff of music in bass clef, 4/4 time, and a key signature of three flats. The melody consists of eighth notes, with a pair of sixths (a pair of notes separated by a sixth interval) marked above several notes.

**12. Descending Octave Displacement**

One staff of music in bass clef, 4/4 time, and a key signature of three flats. The melody features a descending sequence of eighth notes, with some notes marked with a double flat (bb) to indicate octave displacement.

**13. Ascending Octave Displacement**

One staff of music in bass clef, 4/4 time, and a key signature of three flats. The melody features an ascending sequence of eighth notes, with some notes marked with a double flat (bb) to indicate octave displacement.

**14. Scale in Octaves**

One staff of music in bass clef, 4/4 time, and a key signature of three flats. The melody consists of eighth notes, with some notes marked with a double flat (bb) to indicate octave displacement.

**15. Mulcahy Chords**

Two staves of music in bass clef, 4/4 time, and a key signature of three flats. The first staff shows a sequence of eighth-note chords. The second staff shows a similar sequence of eighth-note chords, with some notes marked with a double flat (bb) to indicate octave displacement.

**16. Arpeggio Patterns**

Two staves of music in bass clef, 4/4 time, and a key signature of three flats. The first staff shows a sequence of eighth-note chords. The second staff shows a similar sequence of eighth-note chords, with some notes marked with a double flat (bb) to indicate octave displacement.

# E $\flat$ Minor Scale

## Melodic Minor



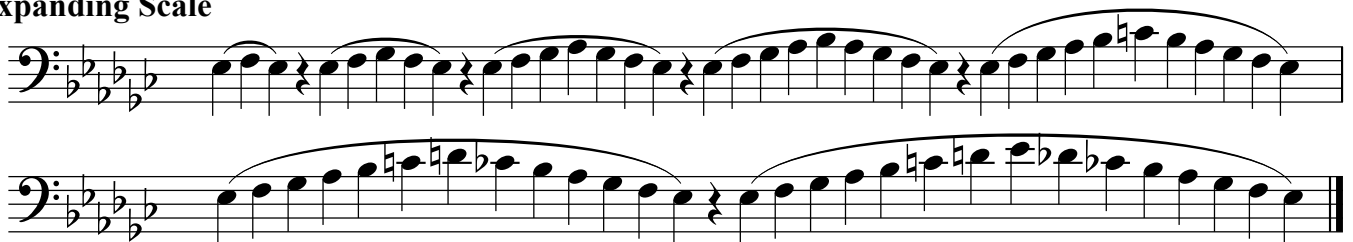
## Harmonic Minor



## 1. Intervals



## 2. Expanding Scale



## 3. Scale in Thirds



## 4. Triplets



## 5. Clarke Study



## 6. Ascending Intervals



## 7. Descending Intervals



## 8. Arpeggio Patterns



## Advanced Patterns

## 9. Arban Modal Scale Pattern

Arban Modal Scale Pattern: Four staves of music in bass clef, 3/4 time, key of B-flat major. The first staff shows the ascending scale with eighth notes. The second staff shows the descending scale with eighth notes. The third staff shows a descending scale with eighth notes and a final quarter note. The fourth staff shows a descending scale with eighth notes and a final quarter note.

## 10. Remington Modal Scale Pattern

Remington Modal Scale Pattern: Three staves of music in bass clef, 4/4 time, key of B-flat major. The first staff shows the ascending scale with eighth notes. The second staff shows the descending scale with eighth notes. The third staff shows a descending scale with eighth notes and a final quarter note.

## 11. Sixths

Sixths: One staff of music in bass clef, 4/4 time, key of B-flat major. The melody consists of eighth notes and quarter notes, with a final quarter note.

## 12. Descending Octave Displacement

Descending Octave Displacement: One staff of music in bass clef, 4/4 time, key of B-flat major. The melody consists of eighth notes and quarter notes, with a final quarter note.

## 13. Ascending Octave Displacement

Ascending Octave Displacement: One staff of music in bass clef, 4/4 time, key of B-flat major. The melody consists of eighth notes and quarter notes, with a final quarter note.

## 14. Scale in Octaves

Scale in Octaves: One staff of music in bass clef, 4/4 time, key of B-flat major. The melody consists of eighth notes and quarter notes, with a final quarter note.



15. Mulcahy Chords

Musical notation for Mulcahy Chords. The piece is in bass clef, 4/4 time, and the key signature has two flats (B-flat major). The notation consists of two staves. The first staff contains the first four measures, and the second staff contains the next four measures. The melody is primarily eighth-note based, with some chords and rests interspersed.

16. Arpeggio Patterns

Musical notation for Arpeggio Patterns. The piece is in bass clef, 4/4 time, and the key signature has two flats (B-flat major). The notation consists of two staves. The first staff contains the first four measures, and the second staff contains the next four measures. The melody is primarily eighth-note based, with some chords and rests interspersed.